

Explorer 727

Provides broadband to moving vehicles

EXPLORER 727 is a high-speed, vehicular broadband terminal. It consists of three fully integrated units – a transceiver, an IP handset and a roof mountable antenna.

Whether you're engaged in defense, humanitarian operations, live radio or TV broadcasts or telemedicine, you need rapidly deployable communication equipment you can always rely on.

- **Broadband-on-the-Move:** Constantly tracks satellite positions and makes high-speed connectivity and communication possible – even at speeds in excess of 200 km/h
- **Mobile communication hub:** Place the antenna on the roof of your vehicle to turn it into a **complete mobile communication hub**. Provides access to the internet and phone networks instantly
- **Seamless global coverage:** High-speed broadband connection at all times regardless of time, place or job

Specifications

Dimensions

Terminal

H/W/D: 42.5x247x270mm

H/W/D: 1.67x9.72x10.63inches

Antenna

H/W: 160/Ø476.5mm

H/W: 6.3/Ø18.76inches

Weight

Transceiver: 2.4 kg/5.5 lbs

Antenna: 6 kg/13.2 lbs

Data capabilities

Standard IP:

Receive: 432kbps

Transmit: 432kbps

Streaming IP: 32, 64, 128, 256kbps (256kbps @ elevation > 45°)

ISDN: UDI 64kbps/RDI 56kbps (@ elevation > 15°)

Text capabilities

SMS 1 60 char.

Voice capabilities

Standard voice: 4 kbps

Premium voice: 3.1 kHz audio, 64 kbps (@ elevation > 15°)

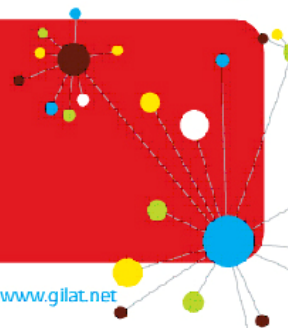
Inmarsat frequencies

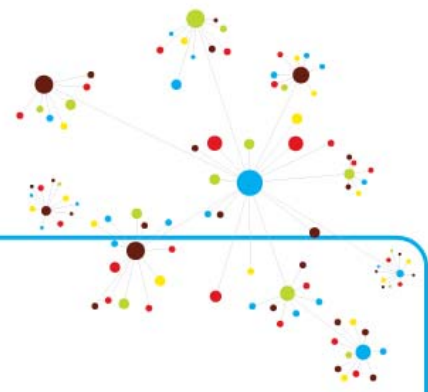
Receive: 1525.0 – 1559.0 MHz

Transceive: 626.5 – 1660.5 MHz



Space for everyone





Recommended antenna cable

Cable loss max:

1525.0 – 1660.5 MHz 20 dB

36 – 54 MHz 4 dB

Maximum DC loop resistance 0.6 ohm

Max. cable length pr. type

RG-223_U-01 14 m/46 ft

RG-214_U-01 50 m/164 ft

Environmental Conditions

Operating temperature -25 to +55°C/-13 to 131°F

Water and dust Transceiver: IP-31/Antenna: IP-56

Relative humidity 95% non-condensing (at +40°C/104°F)

Storage temperature -40 to +85°C/-40 to 185°F

Survival temperature -40 to +80°C/-40 to 176°F

Interfaces

4x10/100 Mbps Ethernet LAN user ports w/PoE

Max power (12V) at: 30 W

Max power (24V) at: 60 W

1xISDN Euro - RJ-45

2x2-wire Analog - RJ-11

5xI/O connector with General Purpose I/Os

Pin 1: Ringer, Pin 2: Warning, Pin 3: Mute,

Pin 4: Radio Silence, Pin 5: Ignition Control

1xSIM card slot

1xHeavy duty power input plug (10-32 VDC)

w/remote on/off and locking mechanism

Power

Maximum incl. antenna & PoE @ 10-32 V: 150 W

General

User interface

- Status LEDs for Power, Terminal, Antenna, Messages, LAN Activity, Link and PoE
- Factory default reset button
- Power on/off switch
- Thrane & Thrane web interface
- BGAN LaunchPad

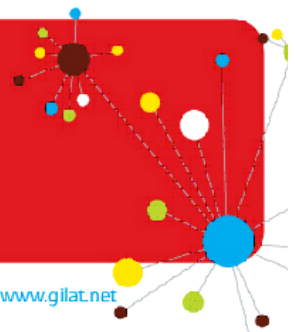
Languages

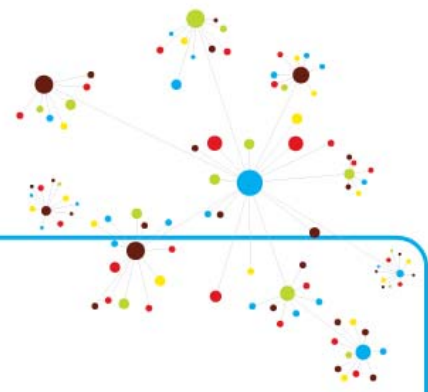
- UK, FR, DE, ES, RU and CN (CN end 2009)

Approvals

- CE, GMPCS, FCC
- Inmarsat Land Vehicular Type Approval

Space for everyone





Features

- Phonebook
- Message indicator
- Restricted dialing
- Traffic logging
- Admin control (password protected)
- Webservice
- Router or direct mode
- Network Management
- DHCP
- SIP server (end 2009)
- Up to 11 x PDP context
- Point-to-Point Protocol over Ethernet (PPPoE)
- Power over Ethernet (PoE)

Package

- EXPLORER 727 Terminal
- EXPLORER 727 Tracking Antenna
- Antenna cable, coax w/ TNC plug (2.7 m & 8 m/8.8 ft & 26 ft)
- Standard ethernet cable (5 m/16.4 ft)
- 24 VDC input cable (6 m/19.7 ft)
- Thrane IP handset w/ cradle & coiled cable
- Cable between cradle & terminal (5 m/16.4 ft)
- Antenna mounting kit (Fixed/Rail)
- Cable support
- Documentation package (Getting started kit & CD)

Accessories

- 19" Rack mount (terminal)
- EXPLORER 2-wire handset
- Magnetic mount (antenna)
- Optional antenna color: White

NB 1: Product meets or exceeds Inmarsat specifications for operation on the Inmarsat Broadband Global Area Network (BGAN).

NB 2: Product performance depends on a wide range of factors and actual usage.

71-129627 · 06.09 · playground.com

Space for everyone

