

Fleet Management – MHub828-H

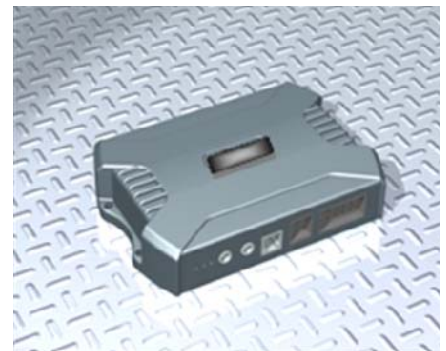
The MHub828-H is a Hybrid Fleet Telematics unit suited to sophisticated power users of Fleet Management solutions. The device boasts a wide array of functionalities including distribution management, vehicle maintenance and utilization, comprehensive accident reconstruction, communication with back office platform (Routing & Scheduling, WMS, ERP) and POD systems, etc.

The MHub828-H is designed to address many of the operational challenges prevalent amongst the commercial fleets. These include basic activity monitoring, reduction of operating costs and enhancing the management of the Supply Chain.

The MHub has been deployed around the globe across a variety of industries such as logistics, utilities, insurance, telecoms, public transport and emergency vehicles.

Key benefits

- Enhanced Security and Safety of Assets
- Improved Operating Efficiencies
- Cost Control
- Maximization of Asset Utilization
- Increased Customer Satisfaction
- Efficient Asset Recovery



Features

Automatic Vehicle Location [AVL]

Using its onboard Global Positioning System (GPS) receiver the MHub provides accurate location information. Additional information includes trip data, driver identification, input status, output control, speeding and odometer.

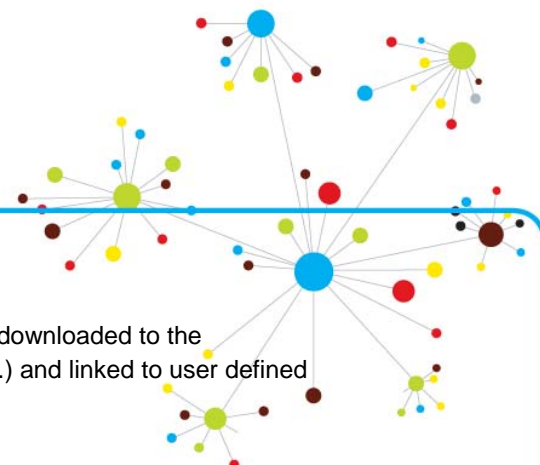
Driver Management

Active monitoring of abusive driver behavior. Monitored parameters include excessive idle, harsh braking, excessive acceleration, and speeding, over-revving and freewheeling.

The analyzed information provides the operator with a valuable tool to minimize fuel and maintenance costs while maximizing safety.

CHALLENGE • CREATE • CONNECT





Zone Management

Monitoring of entry and exit of user defined geofences. Geofences downloaded to the MHub can be categorized (i.e. customers, fuel stations, depots, etc.) and linked to user defined actions.

Distribution Management

Scheduled delivery plans are downloaded to the MHub. The MHub monitors the execution of the delivery plan and reports action vs. planned. This feature has been designed to facilitate integration with 3rd party routing and optimization platforms, providing the operators with real time delivery execution analysis.

Accident Reconstruction

The MHub logs relevant vehicle data including location, speed, direction and harsh braking on a second-by-second basis. After detecting an impact, the device automatically transmits the accident log to a centralized platform. This provides the operator with an accident notification and full reconstruction of the events leading to the accident.

Power Modes

Using the latest technologies, the MHub has the ability to intelligently switch between various power modes while maintaining full functional ability, allowing a vehicle to stand for weeks without being driven, while not excessively draining the vehicle battery.

Satellite Hybrid Communications

A hybrid satellite and GSM communication platform. This provides data communication redundancy in remote areas ensuring “Always Available” communication. Using Scope’s

Least Cost Routing engine, the operator can, maintain cost efficiency by limiting the satellite communications instances to high priority events in areas with no GSM coverage.

Temperature Monitoring

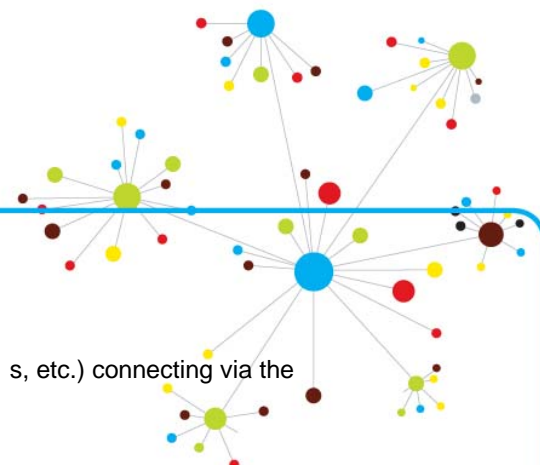
Temperature monitoring of refrigeration compartments utilizing digital temperature sensors with a range of -20°C to +120°C.

Least Cost Routing

Utilizing a proprietary intelligent messaging engine, the MHub selects the least cost data transmission based on user defined parameters of location (i.e. roaming status), data priority and availability of communication bearers.

CHALLENGE • CREATE • CONNECT





M-Link

Provision of internet access to 3rd party devices (i.e. laptops, PDA s, etc.) connecting via the MHub. Access is provided for a user defined time period.

In Vehicle Networks

Interface to the standard J1939 or FMS Specification vehicle networks. The vehicle data provided includes essential information such as odometer, trip distance, fuel tank level, fuel consumption, water temperature, oil pressure, axel load, engine hours and TCO data.

Mobile Resource Identification

Drivers and any other accompanied mobile workforce can be uniquely identified and matched with a user defined activity profile (APF). For example a driver's APF can be limited to specific days of the week, times of the day, and location. On identification of the driver the MHub will determine whether a given driver may be allowed to use the vehicle based on the allocated APF. All events relating to the vehicle usage shall be associated with the authenticated driver.

PDA Interface

Communication and data file transfers (i.e. invoices, routes, EPOD files, etc.) between the PDA and back office platforms are facilitated via the MHub ensuring a reliable means of data synchronization. Interface between the PDA and the MHub is provided via an easily integrated API.

Dynamic Trigger Configuration (DTC)

Utilizing an intelligent proprietary Dynamic Trigger Configuration (DTC) engine, any user defined event and an associated action can be configured and applied to the MHub unit over the air, providing an easily adaptable platform to dynamically changing requirements.

Onboard Navigation Assistance

Real time GPS data is channeled to 3rd party navigation systems.

